

Mark Anthony

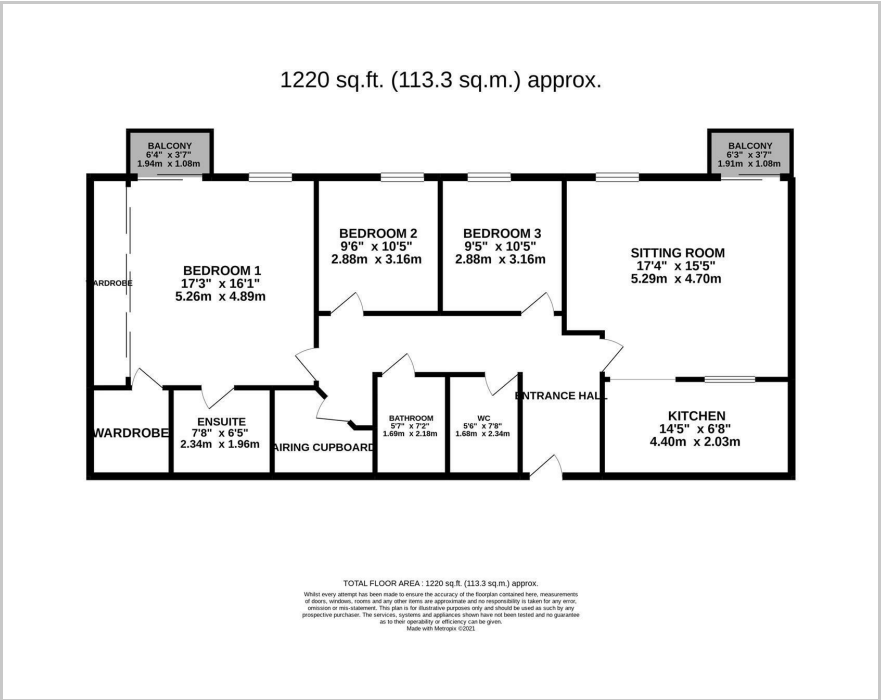
Estate Agents

107 Capitol Square, Epsom, KT17 4NR

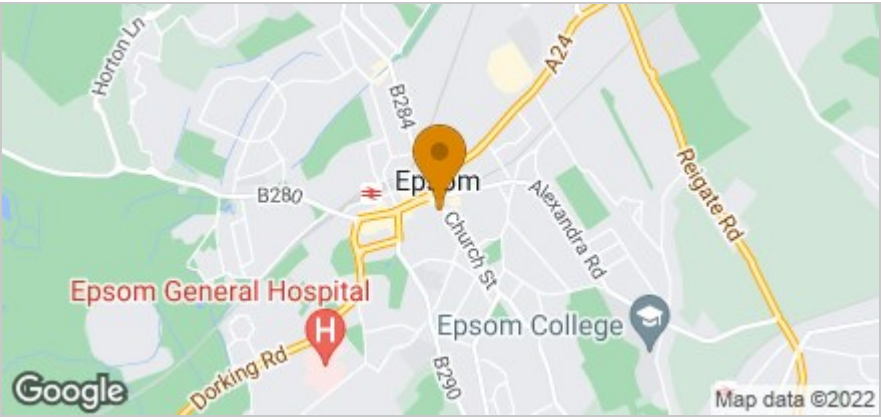
£440,000



Floor Plan



Area Map



These particulars, whilst believed to be accurate are set out as a general outline only for guidance and do not constitute any part of an offer or contract. Intending purchasers should not rely on them as statements of representation of fact, but must satisfy themselves by inspection or otherwise as to their accuracy. No person in this firm's employment has the authority to make or give any representation or warranty in respect of the property.

Mark Anthony Estate Agents 28 High Street, Ewell, Surrey, KT17 1RW
Tel: 02083937275 Email: mark@markanthonyestateagents.co.uk www.markanthonyestateagents.co.uk

Accommodation

- Exceptional three double bedroom executive apartment
- Service charge June 21 £5552
- Over 1200 Sq ft of accommodation
- 17' x 15' Reception room with balcony
- Fitted kitchen with high end appliances
- 17' x 15' Master bedroom with ensuite shower, walk in wardrobe and balcony
- Modern family bathroom
- Secure underground parking - 2 bays
- No chain
- Epc Rating B

Viewing

Please contact our Ewell Village Office on 02083937275 if you wish to arrange a viewing appointment for this property or require further information.

Energy Efficiency Graph

